

THE
**BERKELEY
SQUARE**
ESTATE



1ST FLOOR APARTMENT, 18 BRUTON PLACE
MAYFAIR LONDON W1

1,824 SQ FT (169 SQ M) LET

The apartment has been finished to the most exacting standard and incorporates cutting edge finishes throughout, to give prospective tenants a comfortable and stylish modern living environment finished with quality new contemporary furnishings.



1ST FLOOR APARTMENT, 18 BRUTON PLACE

MAYFAIR LONDON W1

LET

DESCRIPTION

A luxury refurbishment of this expansive 1,824 sq ft first floor apartment offering double reception room with open-plan kitchen, two large double bedroom suites, guest double bedroom, bathroom and study area, located just off the northern end of Berkeley Square.

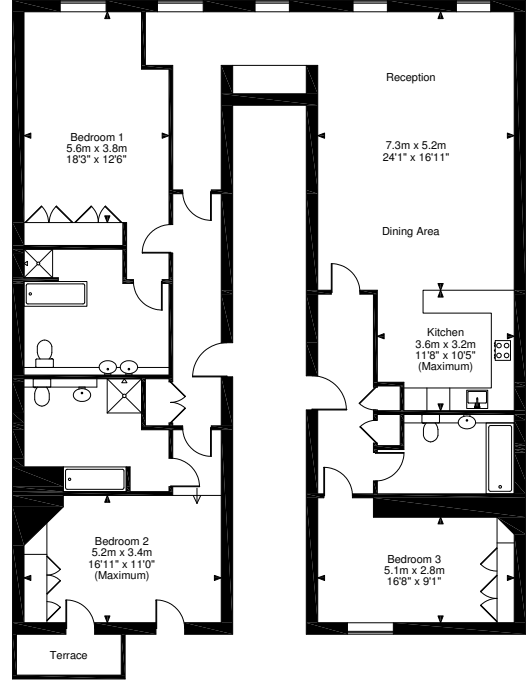
LOCATION

Bruton Place is a vibrant mews enclave with a mixture of quality restaurants and chic boutiques, located in the heart of Mayfair off the north east of Berkeley Square.

The property is within close proximity to high end fashion retailers on Bond Street, Bruton Street and Mount Street and has excellent transport links including Green Park and Bond Street underground stations.



FLOOR PLAN



Floor plan not to scale. For indicative purposes only

RENT

Available furnished £1,950 per week.

EPC

The apartment has an epc rating of C (69).

Alastair Mercer

enquiries@mercerpasqua.co.uk

020 7665 6633



We wish to advise prospective purchasers that these sale particulars are believed to be correct, but their accuracy is in no way guaranteed, nor do they form part of any contract. We have not carried out a detailed survey nor tested the services, appliances or specific fittings.

May 2014.

taylorreid design +44 (0) 20 7355 2500